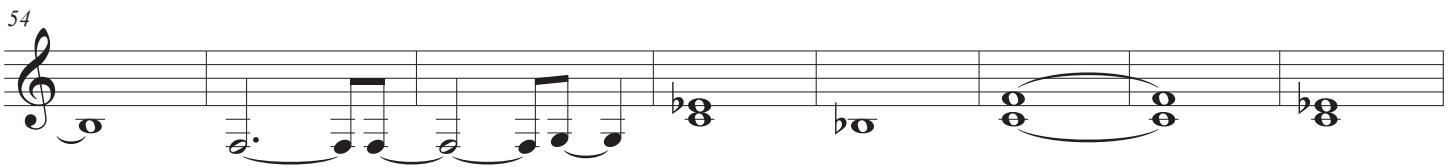
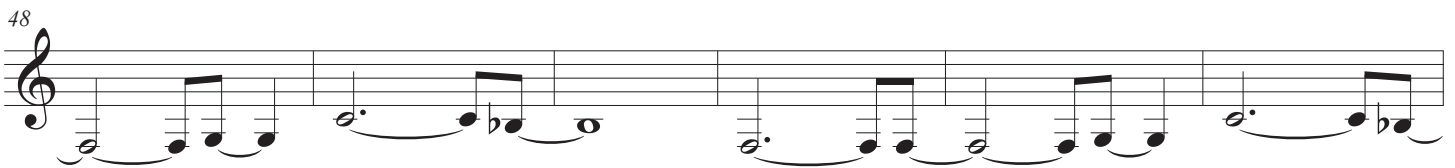
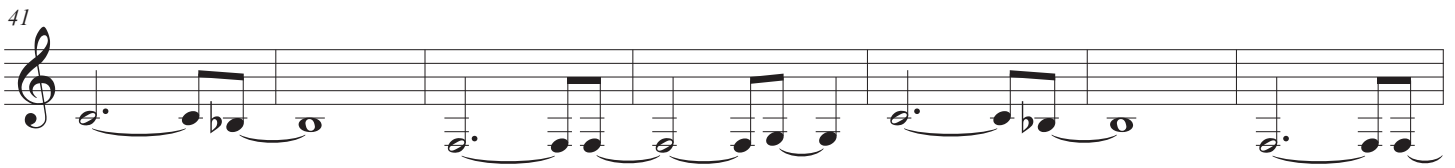
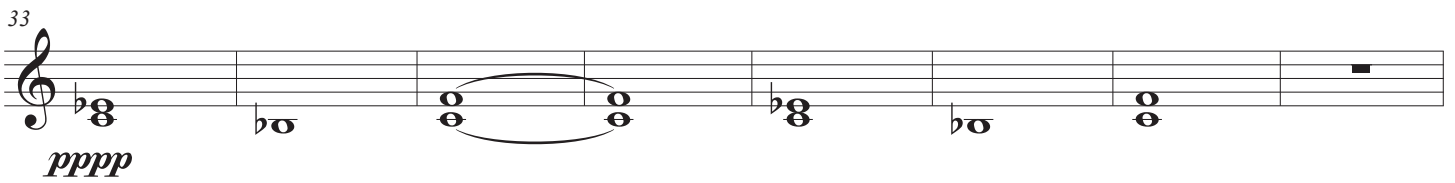
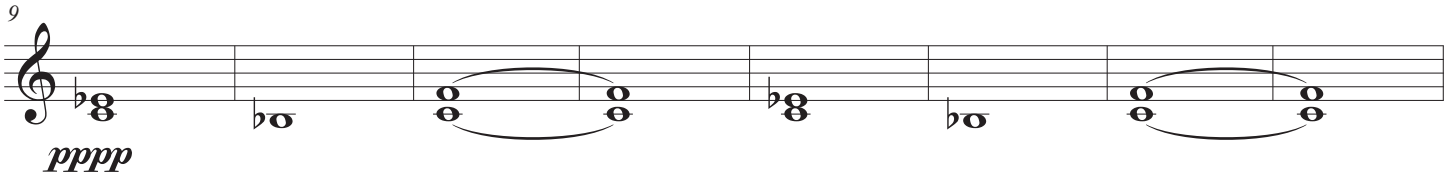
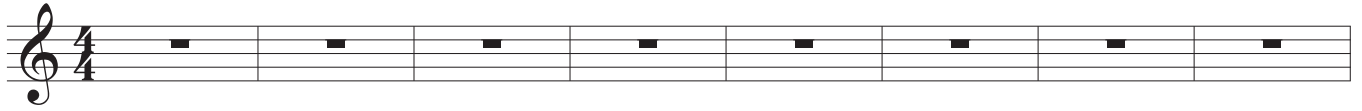


Second Chance

Above and Beyond

Aaron Woodfin



Second Chance

62

The image shows a single musical staff with a treble clef and a key signature of one flat (B-flat). The staff contains a whole note chord consisting of two notes: a G4 (middle G) and a B-flat4 (B-flat). The notes are beamed together and have a slur above them, indicating they are part of a single melodic phrase. The staff ends with a double bar line.